

CORPORATE
PACKAGES



ESCAPABLE

ESCAPABLE, THORNES LANE WHARF, WAKEFIELD, WF1 5RL

WWW.ESCAPABLE.CO.UK

01924 682281



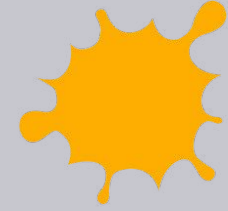
WHY CHOOSE ESCAPABLE?



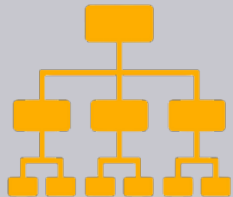
COMMUNICATION IS A KEY ELEMENT OF ANY ESCAPE ROOM EXPERIENCE. ALL OF OUR ROOMS INCLUDE CHALLENGES THAT REQUIRE RELAYING INFORMATION BETWEEN YOUR TEAM TO SOLVE PUZZLES, WHICH IS A GREAT WAY TO STRENGTHEN COMMUNICATION!



ESCAPE ROOMS ARE WELL-KNOWN TO STRENGTHEN TEAMS AND DEVELOP KEY PROFESSIONAL SKILLS. HAVING EVERYONE WORKING TOGETHER TOWARDS A COMMON GOAL INSPIRES SYNERGY AND ENCOURAGES THE CELEBRATION OF ACHIEVEMENTS.



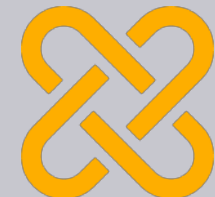
IT'S ALMOST AS IF THE PHRASE "THINKING OUTSIDE THE BOX" WAS CREATED WITH ESCAPE ROOMS IN MIND! WITH A WIDE VARIETY OF MENTAL, PHYSICAL AND LOGICAL PUZZLES WE'RE BOUND TO GET YOUR CREATIVE JUICES FLOWING!



THE BEST ESCAPEES IDENTIFY THEIR TEAM'S STRENGTHS AND DELEGATE TASKS. OUR PUZZLES LEND THEMSELVES TO A RANGE OF SKILLS; SOME LOGICAL, OTHERS PHYSICAL OR MATHS-BASED ETC... ARE YOU A PROBLEM SOLVER, MORE DEXTEROUS, OR A NATURAL LEADER?



WE HAVE FRIENDLY AND PROFESSIONAL STAFF WHO ARE ALWAYS ON HAND TO ASSIST YOU IN ANYWAY POSSIBLE!



CERTAIN PUZZLES AND PHYSICAL CHALLENGES AT OUR ESCAPE ROOMS REQUIRE ONE PERSON TO DIRECTION WHILE THE OTHER CONTROLS. OUR ESCAPE ROOMS ARE A GREAT WAY TO DEVELOP COOPERATION WITHIN YOUR TEAM, AND IMPORTANTLY HAVE FUN!

PREVIOUS TEAMBUILDING CLIENTS...



gomedia

TWO HOUR PACKAGE



LOOKING TO BRING A LARGE GROUP FOR A FUN FILLED DAY OF CHALLENGES AND TEAM BUILDING?

OUR TEAM OF ENTHUSIASTIC AND ENERGETIC HOSTS ARE SURE TO PROVIDE AN EXPERIENCE TO REMEMBER!



This package includes:

- >> ONE UNIQUE ESCAPE ROOM GAME PER PERSON.
- >> DEDICATED EVENT PLANNER.
- >> FIVE STAR RATED ESCAPE ROOMS FOR TEAM BONDING AND FUN.
- >> FREE TEA, COFFEE, JUICE.
- >> USE OF OUR FUNCTION ROOM FOR THE FULL 2 HOUR DURATION.



Example timings

- 10:00 - Arrival, tea, coffee, juice, served.
- 10:15 - Briefing.
- 10:30 - Escape room game.
- 11:30 - Game debrief.
- 11:45 - Results announced.
- 12:00 - End.

£15
PER PERSON



12 - 30
PEOPLE

Our
Function
Room



Outatim



A Visit From Our Friends
At Wakefield Council

HALF DAY PACKAGE



ARE YOU AND YOUR TEAM UP FOR A REAL CHALLENGE?
WHY NOT TEST YOUR SKILLS AT TWO OF OUR ADVENTURE FILLED
ESCAPE ROOMS?



This package includes:

- » TWO UNIQUE ESCAPE ROOM GAMES PER PERSON, WHEN BOOKING BETWEEN 12- 30 PEOPLE.
- » ONE UNIQUE ESCAPE ROOM GAME PER PERSON, WHEN BOOKING BETWEEN 31-60 PEOPLE.
- » DEDICATED EVENT PLANNER.
- » FIVE STAR RATED ESCAPE ROOMS FOR TEAM BONDING AND FUN.
- » FREE TEA, COFFEE, JUICE.
- » USE OF OUR FUNCTION ROOM FOR YOUR ENTIRE STAY!



Example timings

10:00 - Arrivals; tea, coffee, juice served.

10:15 - Briefing.

10:30 - First escape room game.

11:30 - Game debrief.

11:45 - Lunch; tea, coffee, juice, served.

12:15 - Second escape room game.

13:15 - Game debrief.

13:30 - Results announced.

13:45 - End.

£20
PER PERSON



12 - 30
PEOPLE

£15
PER PERSON



31 - 60
PEOPLE



Avast



Go Media

Escaped In 00:58:50

"We had a fantastic day out at Escapable - Escape Rooms over the weekend for our first social event of 2022. We put our team's renowned problem solving skills to the test in the 'Back to the Future' themed room which awarded us with some snazzy lab coats and a whole host of other surprises!"
- Go Media

FULL DAY PACKAGE



ARE YOU LOOKING FOR A FULL DAY OF ESCAPE ROOM FUN?
THEN THIS PACKAGE IS PERFECT FOR YOU!



This package includes:

- » FOUR UNIQUE ESCAPE ROOM GAMES PER PERSON, WHEN BOOKING BETWEEN 12- 30 PEOPLE.
- » TWO UNIQUE ESCAPE ROOM GAMES PER PERSON, WHEN BOOKING BETWEEN 31-60 PEOPLE.
- » DEDICATED EVENT PLANNER.
- » FIVE STAR RATED ESCAPE ROOMS FOR TEAM BONDING AND FUN.
- » FREE TEA, COFFEE, JUICE.
- » USE OF OUR FUNCTION ROOM FOR YOUR ENTIRE STAY!



Example timings

- 10:00 - Arrivals; tea, coffee, juice served.
- 10:15 - Briefing.
- 10:30 - First escape room game.
- 11:30 - Game debrief.
- 11:35 - Break.
- 11:45 - Second escape room game.
- 12:45 - Game debrief.
- 12:50 - Lunch; tea, coffee, juice, served.
- 13:30 - Third escape room game.
- 14:30 - Game debrief.
- 14:35 - Break
- 14:45 - Fourth escape room game.
- 15:45 - Game debrief.
- 15:50 - Results Announced.
- 16:00 - End

£40
PER PERSON

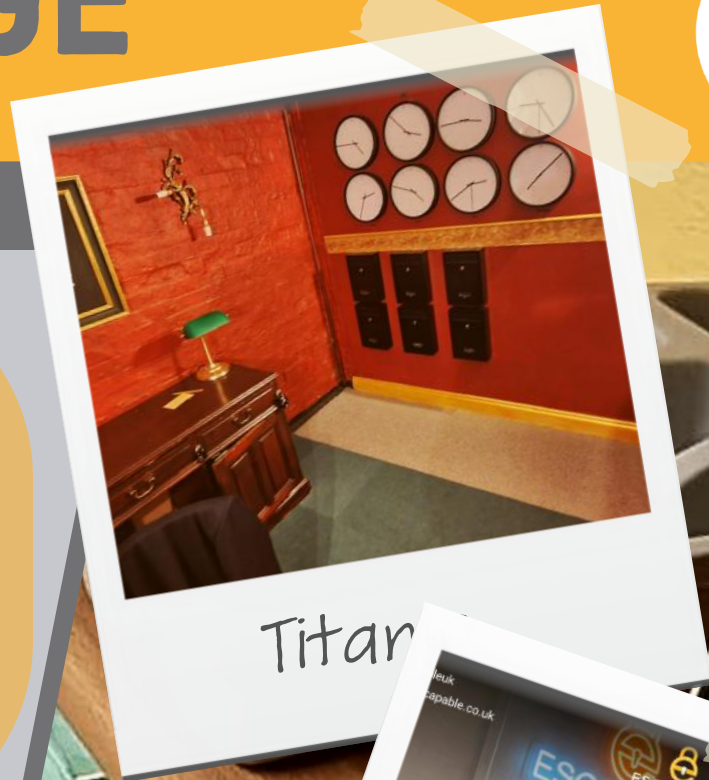


12 - 30
PEOPLE

£20
PER PERSON



31 - 60
PEOPLE



Titan



One of our lovely teams!

ON SITE PACKAGE



CAN'T MAKE IT TO US? WE'LL BRING THE ESCAPE TO YOU!



This package includes:

- >> CHOICE OF TWO UNIQUE 'ESCAPE ROOM' STYLE PUZZLE BOXES!
OR WE CAN RUN BOTH GAMES AT THE SAME TIME!
- >> GAME DELIVERED DIRECT TO YOUR SITE!
- >> DEDICATED EVENT PLANNER.
- >> GAME MASTERS SUITED TO RUN YOUR GAME THROUGHOUT THE
DURATION OF YOUR GAMES.



Example timings

- 10:00 - We Arrive & set up On Site.
- 10:30 - First Game(s) Starts.
- 11:30 - First Game(s) Finishes.
- 11:45 - Second Game(s) Starts.
- 12:45 - Second Game(s) Finishes.
- 13:00 - Third Game(s) Starts.
- 14:00 - Third Game(s) Finishes
- 14:30 - End.

**TO BOOK
OR FOR
MORE
INFO
CONTACT
US!**

PRICING
VARIES
DEPENDING ON
NUMBER OF
PARTICIPANTS
& TRAVELLING
DISTANCE.

INFO@ESCAPABLE.CO.UK
01924 682281



*A Very Suspicious Package -
Portable Game!*



*Avast -
Portable Game*



ESCAPABLE



ESCAPABLE



ESCAPABLE



ESCAPABLE



WAS A BRILLIANT ESCAPE ROOM, FULL OF EXCITEMENT ALL WAY THROUGHOUT. THEY HAVE PUT A LOT OF THOUGHT INTO THE GAMES AND THE WHOLE IMMERSIVE EXPERIENCE WAS SECOND TO NONE. IT'S DEFINITELY A 4D EXPERIENCE.

JONNY M, TRIPADVISOR

ME AND MY PARTNER ABSOLUTELY LOVED OUR TIME HERE, DEFINITELY RETURNING & DEFINITELY RECOMMEND TO ANYONE INTERESTED. THE ATMOSPHERE WAS INCREDIBLE!

COURTNEY B, TRIPADVISOR

WE HAD BEEN TO ESCAPABLE BEFORE THEY MOVED TO THEIR NEW PREMISES AND REALLY ENJOYED OURSELVES, BUT THIS VISIT WAS OUT OF THIS WORLD, REALLY INTERACTIVE WITH NUMEROUS VARIED CLUES ACROSS DIFFERENT TIME ZONES AND ROOMS . WHETHER YOU'VE BEEN TO AN ESCAPE ROOM BEFORE OR NOT YOU'LL ENJOY YOURSELF, BUT CAN YOU ESCAPE IN TIME

ANDY NOONAN, FACEBOOK

CAME WITH A GROUP OF 10 YESTERDAY AND WE DID TWO ROOMS. WE ALL REALLY ENJOYED THE EXPERIENCE. WE HAVE USED DIFFERENT ESCAPE ROOM COMPANIES BEFORE AND THIS WAS ONE OF THE BEST COMPANIES WE HAVE USED. STAFF WERE AMAZING AND WE CAN'T WAIT TO COME BACK AGAIN.

CLAIRE LOUISE CLAYTON, FACEBOOK

TESTIMONIALS



ESCAPABLE



ESCAPABLE



ESCAPABLE



ESCAPABLE



THIS GAME WAS SO MUCH FUN! THE GAME PLAY FLOWED REALLY WELL, THERE WAS A SOUNDTRACK ACCOMPANYING THE TIME TRAVEL INTO EACH CAREFULLY DECORATED DECADE AND A VERY SATISFYING RETURN TO THE PRESENT- WHICH, TO ME, IS A MUST IN ANY TIME TRAVEL ROOM. IF YOU WERE BORN IN OR BEFORE THE 1980S, YOU MUST PLAY THIS ROOM. ABSOLUTELY UNMISSABLE! ALSO FANTASTIC HOSTING, WE ARE REALLY LOOKING FORWARD TO THE OPENING OF FUTURE ROOMS!

SABRINA [THE OVERTHINKERS], ESCAPE THE REVIEW

WE PLAYED AVAST, TITANIC AND OUTTATIME AND HAD SUCH A GREAT TIME. ALL GAMES FLOWED REALLY WELL AND THE PUZZLES MADE SENSE AND WERE ORIGINAL. SPECIAL EFFECTS ADDED TO THE EXPERIENCE. THE HOSTING WAS OUTSTANDING. WE CAN'T WAIT TO COME BACK FOR MORE ROOMS!

REGGAECOWGIRL, TRIPADVISOR

GREAT WELCOME ON ARRIVAL. OUR GAME MASTER, DRAI, WAS FANTASTIC. COULDN'T HAVE ESCAPED WITHOUT HIS HELP. WE DID THE TITANIC ROOM AND IT WAS GREAT AND HAD DONE SURPRISES!! THOROUGHLY RECOMMEND ESCAPABLE. WE WILL DEFINITELY BE RETURNING TO DO ANOTHER ROOM.

KAREN HATCH, FACEBOOK

YEAH. GREAT HOSTING BY MIKE, VERY FUN AND ENGAGING. WE DID TWO ROOMS, THE TITANIC ONE AND THE BTTF INSPIRED ONE. BOTH ROOMS ARE GREAT, BUT THE OUTTATIME ONE IS SOMETHING ELSE. POSSIBLY THE BEST ROOM I'VE EVER PLAYED. IT WAS FUN. THEMING WAS GREAT. PUZZLES WERE CLEVER AND DIFFERENT, THE SOUNDTRACK IS AWESOME. NICE TOUCHES AND REFERENCES TO THE FRANCHISE BUT STILL A DIFFERENT STORY. LOVED IT. CANT WAIT TO COME BACK WHEN THE NEW ROOM OPENS.

DANIEL GLOVER, FACEBOOK